

FEATURED ORV TRAILS

- 1

**Mu's Nemesis**  
A challenging trail section that requires technical skills to overcome the terrain. Not recommended for the faint of heart. Take the long way around if you're on your own.
- 2

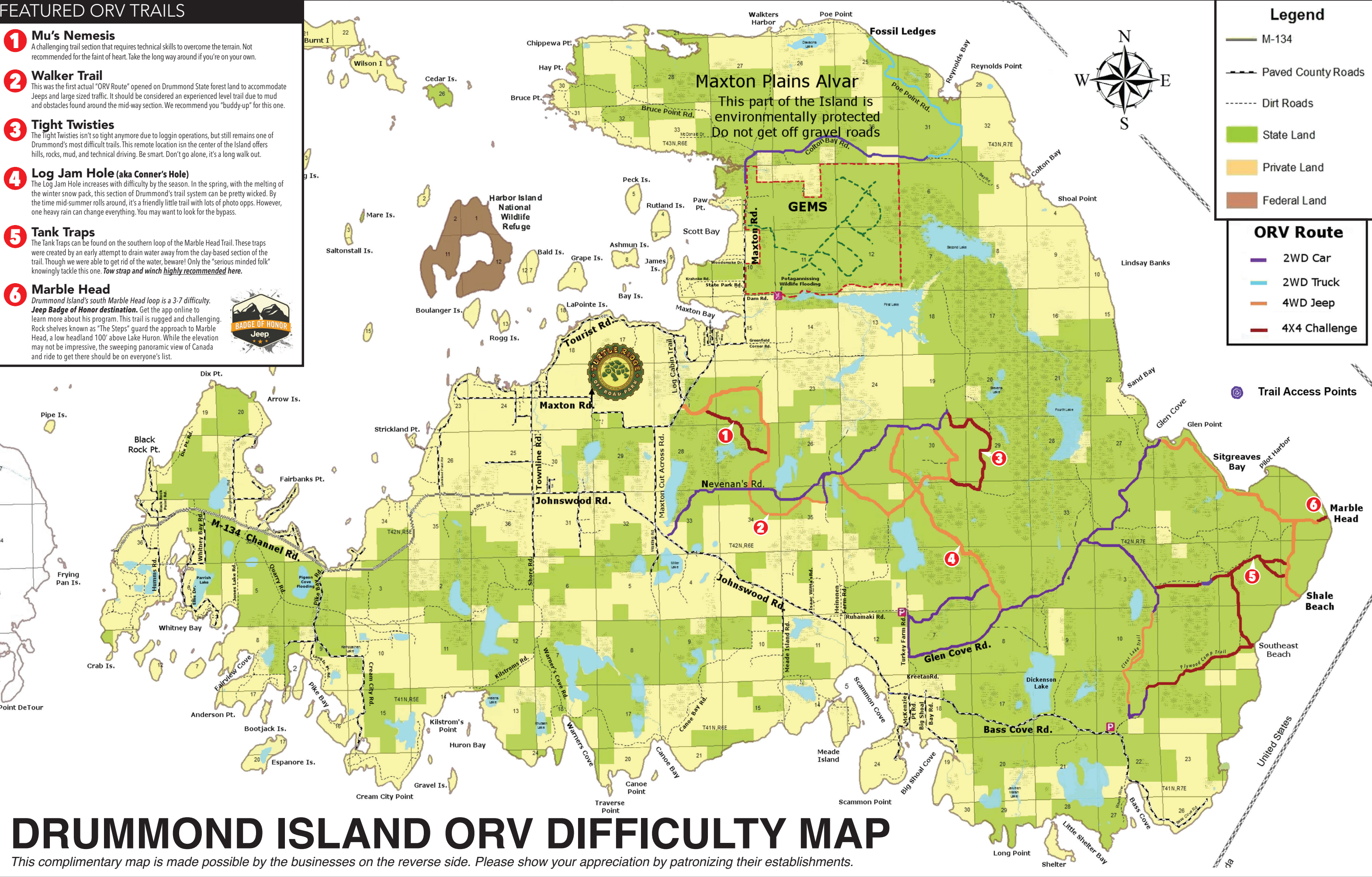
**Walker Trail**  
This was the first actual "ORV Route" opened on Drummond State forest land to accommodate Jeeps and large sized traffic. It should be considered an experienced level trail due to mud and obstacles found around the mid-way section. We recommend you "buddy-up" for this one.
- 3

**Tight Twisties**  
The Tight Twisties isn't so tight anymore due to loggin operations, but still remains one of Drummond's most difficult trails. This remote location in the center of the Island offers hills, rocks, mud, and technical driving. Be smart. Don't go alone, it's a long walk out.
- 4

**Log Jam Hole (aka Conner's Hole)**  
The Log Jam Hole increases with difficulty by the season. In the spring, with the melting of the winter snow pack, this section of Drummond's trail system can be pretty wicked. By the time mid-summer rolls around, it's a friendly little trail with lots of photo opps. However, one heavy rain can change everything. You may want to look for the bypass.
- 5

**Tank Traps**  
The Tank Traps can be found on the southern loop of the Marble Head Trail. These traps were created by an early attempt to drain water away from the clay-based section of the trail. Though we were able to get rid of the water, beware! Only the "serious minded folk" knowingly tackle this one. *Tow strap and winch highly recommended here.*
- 6

**Marble Head**  
*Drummond Island's south Marble Head loop is a 3-7 difficulty.*  
**Jeep Badge of Honor destination.** Get the app online to learn more about his program. This trail is rugged and challenging. Rock shelves known as "The Steps" guard the approach to Marble Head, a low headland 100' above Lake Huron. While the elevation may not be impressive, the sweeping panoramic view of Canada and ride to get there should be on everyone's list.



DRUMMOND ISLAND ORV DIFFICULTY MAP

This complimentary map is made possible by the businesses on the reverse side. Please show your appreciation by patronizing their establishments.